

## Persistence/Graduation Data

### Degrees Awarded by Level

Academic Year	Degrees Awarded	Associate	Baccalaureate	Master's
1993-94	554			
1994-95	558			
1995-96	565			
1996-97	558			
1997-98	575			
1998-99	587	52	524	11
1999-00	629	43	570	16
2000-01	634	44	581	9
2001-02	691	44	632	15
2002-03	786	71	706	9
2003-04	793	61	722	10
2004-05	894	41	839	14
2005-06	909	33	867	9
2006-07	922	0	910	12
2007-08	939	0	927	12
2008-09	1011	0	997	14
2009-10	1032	0	1026	6
2010-11	1086	0	1078	8

## Graduation Rate Percent First-Time, Full-Time Freshmen

Cohort	Enrolled	4 Years	5 Years	6 Years
1986	421	10.0	24.2	30.6
1987	482	10.0	24.5	29.0
1988	421	14.0	34.2	39.0
1989	452	17.2	34.7	40.0
1990	431	17.2	31.0	36.9
1991	474	12.2	27.6	32.3
1992	372	14.8	30.7	35.2
1993	381	14.6	31.4	35.6
1994	474	15.0	25.2	29.5
1995	517	15.3	30.3	34.2
1996	425	17.2	32.5	36.1
1997	531	15.3	30.1	34.9
1998	535	19.8	39.1	41.1
1999	537	16.2	33.1	39.8
2000	531	17.7	30.1	35.8
2001	570	18.6	32.9	38.4
2002	632	18.8	32.3	36.9
2003	682	20.4	34.9	40.5
2004	643	22.4	35.5	38.6
2005	718	21.3	34.2	38.7
2006	781	21.5		
2007	805			
2008	708			
2009	837			
2010	838			
2011	811			

### Semester Persistence Rates

	Fall Semester N	Spring Semester N	Fall to Spring Ret %	Following Fall N	Spring to Fall Ret %	Following Fall Ret %
<b>2010 Cohort*</b>	831	758	91.2%	557	73.4%	67.0%
<b>2009 Cohort*</b>	831	761	91.6%	576	75.7%	69.3%
<b>2007 Cohort*</b>	805	657	81.6%	524	79.8%	65.1%
<b>2006 Cohort*</b>	781	641	82.1%	498	77.7%	63.8%
<b>2005 Cohort**</b>	749	658	87.9%	482	73.3%	64.4%
<b>2004 Cohort**</b>	652	548	84.0%	392	71.5%	60.1%

\*Full-time Only

\*\* Full-time and Part-time

Note: The Freshman Analysis Report was not completed in 2008.

### First Year Retention Trend 2005, 2006, 2007, 2009 and 2010 Cohort (CHE Data)

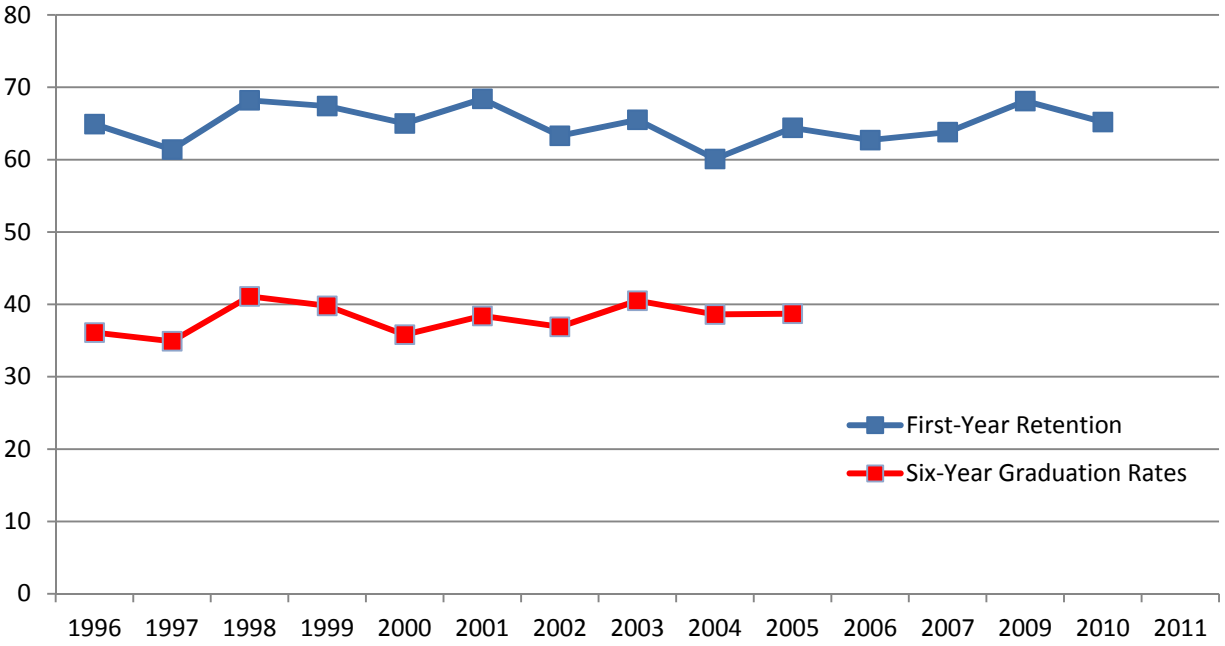
	2005 Cohort		2006 Cohort		2007 Cohort		2009 Cohort							
	N	% Rtrn	N	% Rtrn	N	% Rtrn	N	% Rtrn						
<b>Full-time</b>	718	65.5%	781	63.8%	805	65.1%	831	69.3%						
<b>Part-time</b>	31	38.7%	17	11.8%	27	25.9%	33	36.4%						
<b>Combined</b>	749	64.4%	798	62.7%	832	63.8%	864	68.1%						
	2010 Cohort		2009-2010 % Ret Change											
	N	% Rtrn												
<b>Full-time</b>	831	67.0%	-2.3%											
<b>Part-time</b>	55	40.0%	3.6%											
<b>Combined</b>	886	65.2%	-2.9%											

Note: The Freshman Analysis Report was not completed in 2008.

	1996	1997	1998	1999	2000	2001	2002	2003	2004	2005	2006	2007	2009	2010
<b>First-Year Retention</b>	64.9%	61.4%	68.2%	67.4%	65.0%	68.4%	63.3%	65.5%	60.1%	64.4%	62.7%	63.8%	68.1%	65.2%
<b>Six-Year Graduation Rates</b>	36.1%	34.9%	41.1%	40.6%	35.8%	38.4%	36.9%	40.5%	38.6%					

Note: The Freshman Analysis Report was not completed in 2008.

## First Year Retention Compared to Six-Year Graduation Rates

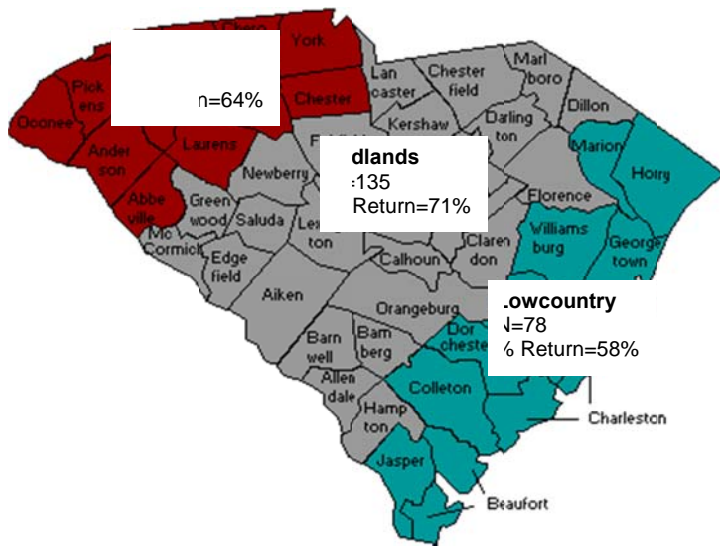


*Note:* The Freshman Analysis Report was not completed in 2008.

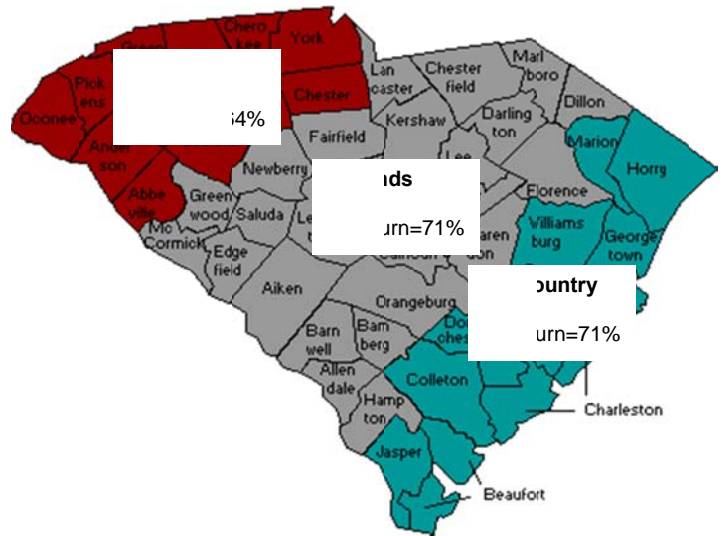
### One-Year Retention Rates by Gender and Race

	2005 Cohort			2006 Cohort			2007 Cohort			2009 Cohort		
	Fall 05	Fall 06	Fall 06	Fall 06	Fall 07	Fall 07	Fall 07	Fall 08	Fall 08	Fall 09	Fall 10	Fall 10
	N	N	Ret. %	N	N	Ret. %	N	N	Ret. %	N	N	Ret. %
<b>Male</b>	262	175	66.8%	284	173	60.9%	316	195	61.7%	291	201	69.1%
Afr. Amer. or Black	58	42	72.4%	55	43	78.2%	58	39	67.2%	76	63	82.9%
Amer. Indian	3	2	67.0%	1	0	0.0%	2	1	50.0%	1	1	100%
Asian, Pacific Isl.	4	1	25.0%	8	4	50.0%	10	4	40.0%	4	1	25%
Hispanic	4	2	50.0%	3	2	66.7%	7	3	42.9%	12	9	75%
White	152	100	65.8%	167	95	56.9%	202	123	60.9%	154	101	65.6%
Other	5	4	80.0%	8	3	37.5%	9	6	66.7%	1	1	100%
No Response	36	24	66.7%	42	26	61.9%	28	19	67.9%	43	25	58.1%
<b>Female</b>	487	307	63.0%	497	325	65.4%	489	329	67.3%	540	375	69.4%
Afr. Amer. or Black	158	112	70.9%	160	111	69.4%	146	105	71.9%	196	146	74.5%
Amer. Indian	3	1	33.3%	3	2	66.7%	0	0	-	1	1	100%
Asian, Pacific Isl.	15	11	73.3%	10	5	50.0%	10	6	60.0%	13	7	53.8%
Hispanic	13	8	61.5%	10	6	60.0%	14	9	64.3%	16	11	68.8%
White	243	138	56.7%	262	171	65.3%	269	170	63.2%	256	174	68.0%
Other	9	6	66.7%	4	2	50.0%	13	9	69.2%	4	4	100%
No Response	46	31	67.4%	48	28	58.3%	37	30	81.1%	54	32	59.3%
<b>Total</b>	749	482	64.4%	781	498	63.8%	805	524	65.1%	831	576	69.3%
	2010 Cohort			Δ 2009/2010 Ret. Rate			Δ 2007/2010 Ret. Rate			Δ 2005/2010 Ret. Rate		
	Fall 10	Fall 11	Fall 11									
	N	N	Ret. %									
<b>Male</b>	270	175	64.8%	-4.3			3.1			-2.0		
Afr. Amer. or Black	67	48	71.6%	-11.3			4.4			-.8		
Amer. Indian	1	0	0%									
Asian, Pacific Isl.	17	12	70.6%									
Hispanic	11	8	72.7%									
White	157	96	61.1	-4.5			.2			-4.7		
Other	14	9	64.3%									
Unknown	3	2	66.7%									
<b>Female</b>	561	382	68.1%	-1.0			.8			5.1		
Afr. Amer. or Black	190	141	74.2%	-.3			2.3			3.3		
Amer. Indian	1	1	100%									
Asian, Pacific Isl.	12	8	66.7%									
Hispanic	29	22	75.9%									
White	305	194	63.6	-4.4			.4			6.9		
Other	24	16	66.7									
No Response	0	0	0									
<b>Total</b>	831	557	67.0%	-2.3			1.9			2.6		

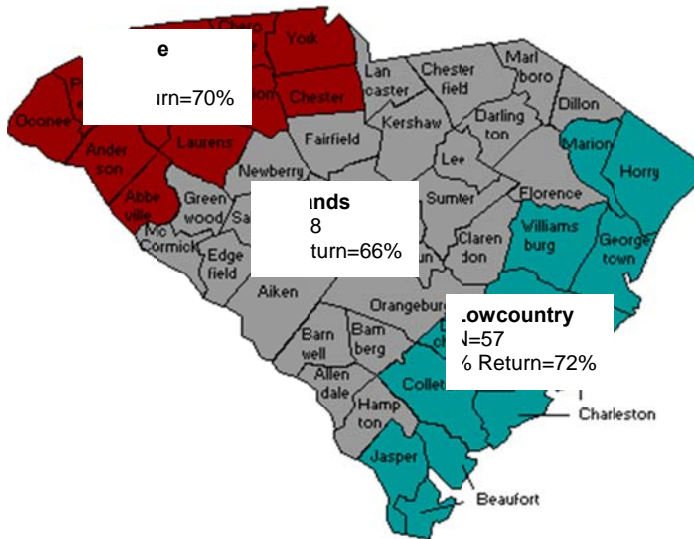
### 2006 Cohort



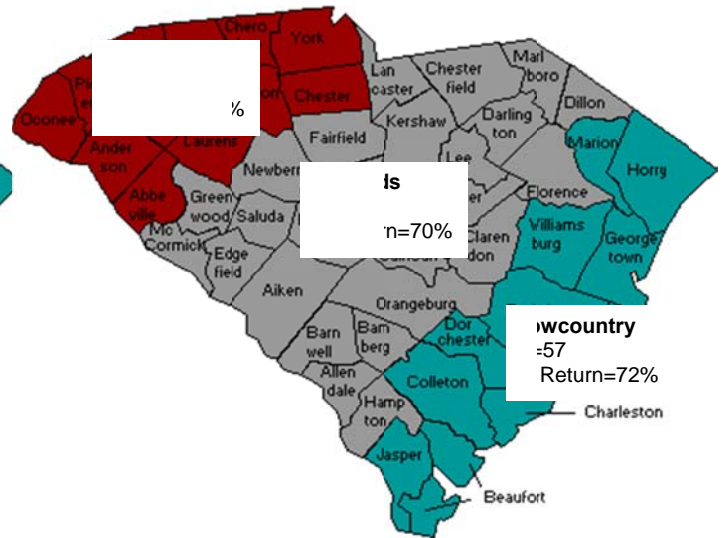
### 2007 Cohort



### 2009 Cohort



### 2010 Cohort



**Freshman GPA and Retention in the Ten Most Common Freshmen Majors 2005, 2006, 2007, 2009, and 2010 Cohorts**

Code	Intended Major	2005 Cohort			2006 Cohort			2007 Cohort		
		N*	Fall Mean GPA*	Pct Return*	N*	Fall Mean GPA*	Pct Return*	N*	Fall Mean GPA*	Pct Return*
106	Biology	102 (3)	2.32 (7)	64.7% (4)	118 (2)	2.46 (7)	55.1% (21)	140 (2)	2.84 (5)	64.3% (4)
991	Business Admin.	107 (2)	2.42 (6)	59.8% (6)	110 (3)	2.69 (5)	58.2% (19)	136 (3)	2.92 (3)	64.0% (5)
640	Communi-cations	29 (6)	2.70 (2)	69.0% (1)	33 (7)	2.60 (6)	72.7% (8)	24 (7)	2.92 (3)	50.0% (7)
311	Early Child. Ed.	20 (7)	2.13 (8)	55.0% (7)	35 (4)	3.19 (1)	77.1% (6)	13	3.06	77.1%
310	Elem. Ed.	31 (5)	2.49 (5)	54.8% (8)	35 (4)	2.94 (3)	71.4% (10)	31 (5)	2.82 (6)	87.1% (1)
160	Exp. Psych.	19 (8)	2.52 (3)	63.2% (5)	34 (6)	2.43 (8)	58.8% (18)	24 (7)	2.75 (7)	50.0% (7)
50	Nursing	122 (1)	2.80 (1)	67.2% (3)	136 (1)	2.98 (2)	72.1% (9)	156 (1)	2.99 (2)	66.7% (3)
373	Sec. Ed.	32 (4)	2.51 (4)	68.8% (2)	31 (8)	2.81 (4)	54.8% (22)	33 (4)	3.18 (1)	84.8% (2)
104	Art Studio									
100	Undeclared									
Code	Intended Major	2009 Cohort			2010 Cohort					
		N*	Fall Mean GPA*	Pct Return*	N*	Fall Mean GPA*	Pct Return*			
106	Biology	122 (2)	2.65 (9)	62% (9)	137 (2)	2.74 (7)	64.9% (5)			
991	Business Admin.	111 (3)	2.70 (7)	69% (7)	91 (4)	2.71 (8)	73.6% (1)			
640	Communi-cations	35 (5)	2.79 (6)	63% (8)	26 (7)	2.92 (5)	56.7% (7)			
108	Computer Science	21 (10)	2.32 (10)	76% (2)	12 (10)	2.69 (9)	66.7% (4)			
310	Elem. Ed.	23 (9)	3.00 (2)	83% (1)	19 (9)	2.65 (10)	73.6% (1)			
160	Exp. Psych.	33 (6)	3.03 (1)	76% (2)	45 (5)	2.80 (6)	71.1% (3)			
50	Nursing	192 (1)	2.93 (3)	73% (4)	201 (1)	2.93 (4)	73.6% (1)			
373	Sec. Ed.	31 (7)	2.66 (8)	71% (5)	29 (6)	2.94 (3)	72.4% (2)			
104	Art Studio	24 (8)	2.90 (4)	71% (5)	22 (8)	2.97 (2)	59.1% (6)			
100	Undeclared	99 (4)	2.80 (5)	62% (9)	96 (3)	3.05 (1)	52.1% (8)			

*\*Numbers in parentheses indicate ranking within each heading.*

**First Time Freshmen Major Declaration Trend  
2006-2010 Cohorts**

Code	Intended Major	2006 Cohort		2007 Cohort		2009 Cohort		2010 Cohort		2006-2010 Change
		N	% of Cohort (Rank)	N	% of Cohort (Rank)	N	% of Cohort (Rank)	N	% of Cohort (Rank)	
320	Art Education	-	-	-	-	3	<1% (22)	-	-	-
104	Art Studio	19	2% (10)	27	3% (7)	24	3% (8)	22	3% (5)	16%
106	Biology	118	15% (3)	140	17% (2)	122	15% (2)	137	4% (4)	16%
991	Business Admin.	110	14% (4)	136	17% (3)	111	13% (3)	94	11% (2)	-17%
109	Chemistry	10	1% (14)	11	1% (13)	19	2% (12)	49	3% (5)	490%
640	Communication	33	4% (5)	24	3% (8)	35	4% (5)	26	3% (5)	-27%
132	Computer Info. Systems	7	1% (14)	7	1% (16)	10	1% (17)	7	<1% (8)	-
108	Comp. Science	16	2% (10)	18	2% (10)	21	3% (10)	12	1% (7)	-33%
587	Criminal Justice	18	2% (10)	12	2% (12)	20	2% (11)	17	2% (6)	-6%
311	Early Childhood Ed.	35	4% (5)	13	2% (11)	17	2% (14)	19	2% (6)	-84%
310	Elementary Ed.	35	4% (5)	31	4% (6)	23	3% (9)	19	2% (6)	-84%
115	English	5	1% (14)	2	<1% (21)	7	1% (19)	4	<1% (8)	-20%
160	Experimental Psych.	34	4% (5)	24	3% (8)	33	4% (6)	45	5% (3)	32%
171	Graphic Design	-	-	-	-	-	-	-	-	-
136	History	4	1% (14)	5	1% (17)	6	<1% (20)	2	<1% (8)	-50%
170	Info. Mgmt. & Systems	2	0% (20)	4	1% (18)	1	<1% (24)	6	<1% (8)	300%
910	Interdisciplinary Studies	1	0% (20)	-	-	-	-	1	<1% (8)	0%
145	Mathematics	3	0% (20)	2	<1% (21)	2	<1% (23)	4	<1% (8)	33%
312	Middle Grades. Ed.	3	0% (20)	2	<1% (21)	12	1% (15)	8	1% (7)	266%
994	Nonprofit	-	-	-	-	-	-	-	-	-
50	Nursing	136	17% (1)	156	19% (1)	192	23% (1)	201	24% (1)	47%
329	Physical Education	14	2% (10)	11	1% (13)	18	2% (13)	10	1%	-40%
157	Political Science	9	1% (14)	10	1% (15)	12	1% (15)	11	1% (7)	22%
373	Secondary Ed.	31	4% (5)	33	4% (5)	31	31	29	3% (5)	-7%
175	Sociology	3	0% (20)	4	1% (18)	4	<1% (21)	3	<1% (8)	-
184	Spanish	3	0% (20)	-	-	1	<1% (24)	-	-	-100%
386	Special Ed.	8	1% (14)	4	1% (18)	8	1% (18)	7	<1% (8)	-14%
100	Undeclared	124	16% (2)	129	16% (4)	99	12% (4)	96	11% (2)	-29%
501	Commercial Music	-	-	-	-	-	-	2	100%	-
<b>Total</b>		<b>781</b>		<b>805</b>		<b>831</b>		<b>831</b>		

\* indicates 2007-2010 change.



**Mean GPA and Retention by  
Life Scholarship Status**

	<b>N</b>	<b>Mean Total SAT</b>	<b>% of Cohort</b>	<b>Fall Mean GPA</b>	<b>Cum. Mean GPA</b>	<b>N Return Soph. Yr.</b>	<b>% Return Soph. Yr.</b>
<b>2010 cohort</b>							
<b>Life Scholarship Recipient</b>	399	995	48%	3.03	2.95	285	71.4%
<b>Non-Life Scholarship Recipient</b>	432	963	52%	2.67	2.54	272	63.0%
<b>Total Cohort</b>	831	979		2.84	557	557	67.0%
<b>2009 cohort</b>							
<b>Life Scholarship Recipient</b>	374	1003	45%	3.08	3.09	281	75.1%
<b>Non-Life Scholarship Recipient</b>	457	946	55%	2.51	2.57	295	64.6%
<b>Total Cohort</b>	831	972		2.76	2.77	576	69.3%
<b>2007 Cohort</b>							
<b>Life Scholarship Recipient</b>	355	1000	44.1%	3.13	3.04	251	70.7%
<b>Non-Life Scholarship Recipient</b>	450	975	55.9%	2.66	2.53	273	60.7%
<b>Total Cohort</b>	805	986		2.87	2.75	524	65.1%
<b>2006 Cohort</b>							
<b>Life Scholarship Recipient</b>	382	1014	48.9%	2.94	2.91	274	71.7%
<b>Non-Life Scholarship Recipient</b>	399	967	51.1%	2.50	2.37	224	56.1%
<b>Total Cohort</b>	781	991		2.72	2.64	498	63.8%

**Highest Enrollment Disciplines  
For Freshmen Who Lost Life Scholarships  
(2010 Cohort)**

	<b>Enrolled</b>	<b>Received a Grade</b>	<b>Earned ≥ 3.0 in Course</b>	<b>Earned &lt; 3.0 in Course</b>
Mathematics	239	209	98 (47%)	111 (53%)
U101	226	223	204 (91%)	19 (9%)
Composition	210	205	152 (74%)	53 (26%)
Natural Sciences (no Labs)	180	88	19 (22%)	69 (78%)
Computer Tech	115	110	69 (63%)	41 (37%)
Psychology	84	81	54 (67%)	27 (33%)
History	58	57	31 (54%)	26 (46%)
Spanish	58	55	43 (78%)	12 (22%)

**(2009 Cohort)**

	<b>Enrolled</b>	<b>Received a Grade</b>	<b>Earned ≥ 3.0 in Course</b>	<b>Earned &lt; 3.0 in Course</b>
Mathematics	154	139	61 (44%)	78 (56%)
Composition	153	146	98 (67%)	48 (33%)
U101	127	125	113 (90%)	12 (10%)
Natural Sciences (no Labs)	102	52	9 (17%)	43 (83%)
Computer Tech	76	74	34 (46%)	40 (54%)
History	65	57	23 (40%)	34 (60%)
Psychology	61	58	30 (52%)	28 (48%)

**(2007 Cohort)**

	<b>Enrolled</b>	<b>Received a Grade</b>	<b>Earned ≥ 3.0 in Course</b>	<b>Earned &lt; 3.0 in Course</b>
Mathematics	157	150	116 (77%)	34 (23%)
Composition	143	141	135 (96%)	6 (4%)
U101	128	127	127 (100%)	- (-)
Natural Sciences	110	95	60 (63%)	36 (37%)
Computer Tech	87	85	81 (95%)	4 (5%)
History	55	54	47 (87%)	7 (13%)
Spanish	55	54	51 (94%)	3 (6%)

Note: The Freshman Analysis Report was not completed in 2008.

### Highest Enrollment Courses For Freshmen Who Lost Life Scholarships (2010 Cohort)

Course Title	N	A		B-B+		3.0 or higher		C-C+		D-D+		F		W/I/NR	
		n	%	n	%	n	%*	n	%	n	%	n	%	n	%
Student in University (SUNV 101)	226	169	75%	35	15%	204	90%	10	4%	5	2%	4	2%	3	1%
Composition (SEGL 101)	184	58	32%	76	41%	134	73%	21	11%	9	5%	16	9%	4	2%
College Algebra (SMTH 121)	118	17	14%	32	27%	49	42%	25	21%	10	8%	13	11%	21	18%
Intro to Computer Tech (SCSC 138)	110	23	21%	45	42%	68	62%	27	25%	6	5%	6	5%	3	3%
Human Anatomy (SBIO 232)	91	4	4%	9	10%	13	14%	11	12%	9	10%	0	0%	58	64%
Intro to Psychology (SPSY 101)	83	22	27%	31	37%	53	64%	18	22%	6	7%	3	4%	3	4%
College Mathematics (SMTH 120)	60	4	7%	23	38%	27	45%	19	32%	9	15%	4	7%	1	2%
Introductory Spanish (SSPN 101)	56	22	39%	21	38%	43	77%	5	9%	3	5%	2	4%	3	5%
Bio Science 1 (SBIO 101)	49	0	0%	5	10%	5	10%	11	22%	6	12%	5	10%	22	45%
Intro to European History (SHST 101)	28	4	14%	14	50%	18	64%	3	11%	2	7%	5	18%	0	0%

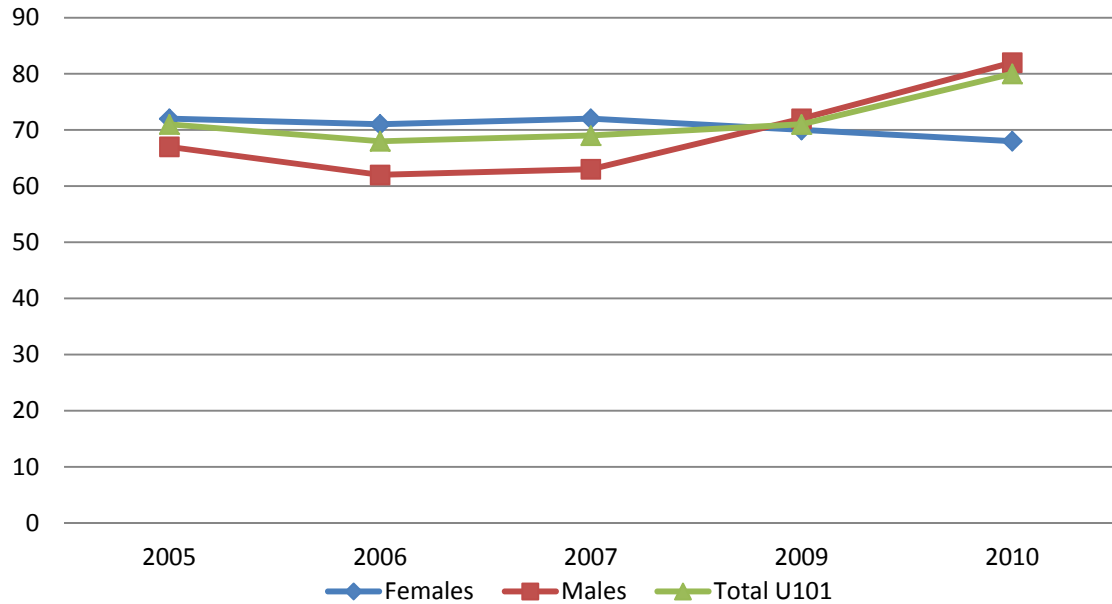
University 101 Freshmen Retention by Race & Gender (2010 Cohort)									
	Males			Females			Total U101		
	N	N Returned	Pct. Returned	N	N Returned	Pct. Returned	N	N Returned	Pct. Returned
White	110	78	70.1%	250	152	60.8%	360	230	63.8%
African American	71	59	83.1%	166	122	73.5%	237	181	76.4%
Other *	27	18	66.7%	52	37	71.1%	79	55	69.6%
<b>Total</b>	<b>208</b>	<b>155</b>	<b>74.5%</b>	<b>468</b>	<b>311</b>	<b>66.4%</b>	<b>676</b>	<b>466</b>	<b>68.9%</b>

\* Other includes American Indian/Alaskan, Asian/Pacific Islander, Hispanic, Non-Resident Alien, and Unknown

University 101 Impact on Freshmen Retention by Race (2010 Cohort)											
	Total U101			Non-U101			U101 vs Non-U101 Δ	2010 Cohort			U101 vs Cohort Δ
	N	N Returned	Pct Returned	N	N Returned	Pct Returned		N	N Returned	Pct Returned	
White	360	230	63.8%	71	44	61.9%	1.9%	431	274	63.6%	0.2%
African American	237	181	76.4%	27	23	85.2%	(8.8%)	264	204	77.3%	(0.9%)
Other *	79	55	69.6%	57	35	61.4%	8.2%	136	90	66.2%	3.4%
<b>Total</b>	<b>676</b>	<b>466</b>	<b>68.9%</b>	<b>155</b>	<b>102</b>	<b>65.8%</b>	<b>3.1%</b>	<b>831</b>	<b>568</b>	<b>68.3%</b>	<b>0.6%</b>

\* Other includes American Indian/Alaskan, Asian/Pacific Islander, Hispanic, Non-Resident Alien, and Unknown

## Univeristy 101 Impact on Freshmen Retention



Note: The Freshman Analysis Report was not completed in 2008.

### University 101 One-Year Retention by Combined SAT Score (2010 Cohort)

SAT Score (Composite)	2010 Cohort			2010 Cohort			U101 vs Non-U101 Δ	2010 Cohort Pct Rtn Fall 2010	U101 vs Cohort Δ
	University 101			Non-University 101					
	N	N Return Fall 2011	Pct Rtn Fall 2011	N	N Return Fall 2011	Pct Rtn Fall 2011			
<b>Below 800</b>	11	9	81.8%	3	2	66.7%	15.1%	78.5%	3.3%
<b>800-890</b>	123	87	70.7%	29	16	55.1%	15.6%	67.3%	3.4%
<b>900-990</b>	205	139	67.8%	32	25	78.1%	-10.3%	69.2%	-1.4%
<b>1000-1090</b>	112	79	70.5%	25	15	60.0%	10.5%	68.6%	1.9%
<b>1100-1190</b>	51	32	62.7%	21	15	71.4%	-8.7%	65.2%	-2.5%
<b>1200 &amp; above</b>	25	14	56.0%	12	9	75.0%	-19.0%	62.1%	-6.1%
<b>Cohort Total*</b>	527	347	65.8%	122	82	67.2%	-1.4%	66.1%	-0.3%

\*Blank SAT Scores are not included in this analysis

**University Housing Freshmen Retention  
by Race & Gender (2010 Cohort)**

	Males			Females			Total Housing		
	N	N Returned	Pct. Returned	N	N Returned	Pct. Returned	N	N Returned	Pct. Returned
White	74	67	90.5%	158	92	58.2%	232	159	68.5%
African American	69	68	98.5%	155	111	71.6%	224	179	79.9%
Other *	15	15	100%	33	24	72.7%	48	39	81.3%
<b>Total</b>	<b>158</b>	<b>150</b>	<b>94.9%</b>	<b>346</b>	<b>227</b>	<b>65.6%</b>	<b>504</b>	<b>377</b>	<b>74.8%</b>

\* Other includes American Indian/Alaskan, Asian/Pacific Islander, Hispanic, Non-Resident Alien, and Unknown

**University Housing Impact on Freshmen Retention  
by Race & Gender (2009 Cohort)**

	Total Housing			Total Non-Housing			Housing vs Non-Housing $\Delta$	2009 Cohort			Housing vs Cohort $\Delta$
	N	N Returned	Pct. Returned	N	N Returned	Pct. Returned		N	N Returned	Pct. Returned	
White	210	135	64.3%	200	140	70%	-5.7%	410	275	67.1%	-2.8%
African American	244	188	77%	28	21	75%	2%	272	209	76.8%	0.2%
Other *	62	43	69.4%	87	49	56.3%	13.1%	149	92	61.7%	7.7%
<b>Total</b>	<b>516</b>	<b>366</b>	<b>70.9%</b>	<b>315</b>	<b>210</b>	<b>66.7%</b>	<b>4.2%</b>	<b>831</b>	<b>576</b>	<b>69.3%</b>	<b>1.6%</b>

\* Other includes American Indian/Alaskan, Asian/Pacific Islander, Hispanic, Non-Resident Alien, and Unknown

**One-Year Retention by First Semester GPA & Cumulative  
Fall/Spring GPA  
(2010 Cohort)**

	Fall 2010			Spring 2011			Fall 2011	
	N	Mean Semester GPA	Pct of Cohort	N	Pct Return Spring	Cum. First Year GPA	N Return Fall 10	Pct Return Fall 10
<b>Complete WD</b>	0	-	-					
<b>0.0-.49</b>	10	.24	1.3%	0	0%	0	5	19.2%
<b>.50-.99</b>	13	.38	1.7%	6	46.1%	.70	3	15.0%
<b>1.0-1.49</b>	17	1.26	2.2%	12	70.5%	1.17	15	46.9%
<b>1.5-1.99</b>	50	1.76	6.6%	33	66.0%	1.78	38	59.4%
<b>2.0-2.49</b>	82	2.22	10.8%	66	80.5%	2.26	55	60.4%
<b>2.5-2.99</b>	146	2.71	19.3%	141	96.5%	2.63	132	71.4%
<b>3.0-3.49</b>	218	3.20	28.8%	186	85.3%	3.07	171	77.4%
<b>3.5-4.00</b>	221	3.73	29.2%	109	49.3%	3.56	155	80.7%
<b>Cohort Total</b>	757			553	73.1%	2.74	574	69.3%

**Top Ten Courses For Freshmen Enrollment  
and Grade Distribution (2010 Cohort)**

Rank	N	Dept	Course	Mean Grade in Course	Mean Fall GPA	A,B's		C's		D,F's		I/NR/W/AUD	
1	692	SUNV	W101	3.67	2.88	620	89.6%	36	5.2%	24	3.5%	13	1.9%
2	662	SEGL	W101	2.95	2.78	465	70.2%	107	16.2%	80	12.1%	10	1.5%
3	376	SMTH	W121	2.39	2.85	143	38.0%	90	23.9%	75	19.9%	68	18.1%
4	319	SCSC	W138	2.79	2.97	182	57.1%	80	25.1%	41	12.9%	16	5.0%
5	294	SPSY	W101	2.91	2.89	191	65.0%	54	18.4%	37	12.6%	12	4.1%
6	212	SSPN	W101	3.00	2.89	145	68.4%	25	11.8%	29	13.7%	13	6.1%
7	205	SBIO	W232	2.36	2.95	36	17.6%	36	17.6%	19	9.3%	114	55.6%
8	173	SMTH	W120	2.42	2.82	79	45.7%	43	24.9%	38	22.0%	13	7.5%
9	138	SBIO	W101	1.91	2.65	23	16.7%	20	14.5%	28	20.3%	67	48.6%
10	92	SHST	W101	2.48	2.68	49	53.3%	17	18.5%	20	21.7%	6	6.5%

**Top Ten Courses For Freshmen Enrollment  
and Grade Distribution (2009 Cohort)**

Rank	N	Dept	Course	Mean Grade in Course	Mean Fall GPA	A,B's		C's		D,F's		I/NR/W/AUD	
1	668	SEGL	W101	2.89	2.77	450	67.4%	116	17.4%	84	12.6%	18	2.7%
2	650	SUNV	W101	3.62	2.85	570	87.7%	39	6.0%	21	3.2%	20	3.1%
3	345	SCSC	W138	2.62	2.88	188	54.5%	72	20.9%	63	18.3%	22	6.4%
4	305	SMTH	W121	2.86	2.91	126	41.3%	81	26.6%	62	20.3%	36	11.8%
5	263	SPSY	W101	2.58	2.78	136	51.7%	61	23.2%	52	19.8%	14	5.3%
6	197	SBIO	W232	2.41	3.07	40	20.3%	34	17.3%	20	10.2%	103	52.3%
7	144	SHST	W101	2.43	2.71	63	43.8%	39	27.1%	34	23.6%	8	5.6%
8	142	SMTH	W120	2.52	2.76	69	48.6%	29	20.4%	30	21.1%	14	9.9%
9	122	SBIO	W101	1.88	2.61	25	20.5%	20	16.4%	30	24.6%	47	38.5%
10	114	SSPN	W101	2.79	2.75	74	64.9%	19	16.7%	19	16.7%	2	1.8%

### Matriculation of First-Time Freshmen Non-Returners

	2010 Cohort (% of non-returners)	2009 Cohort (% of non-returners)	2007 Cohort (% of non-returners)	2006 Cohort (% of non-returners)
<b>4-Year Institutions</b>				
University of South Carolina	46 (17%)	33 (13%)	52 (18%)	35 (12%)
Clemson University	8 (3%)	6 (2%)	11 (4%)	12 (4%)
College of Charleston	2 (.7%)	6 (2%)	6 (2%)	11 (4%)
Winthrop University	3 (1.1%)	2 (0.8%)	3 (1%)	4 (1%)
Lander University	4 (1.4%)	1 (0.4%)	3 (1%)	3 (1%)
USC Beaufort	2 (.7%)	-	2 (0.7%)	2 (0.7%)
Others	29 (11%)	18 (7%)	19 (7%)	18 (6%)
<b>Total</b>	<b>94 (34%)</b>	<b>66 (26%)</b>	<b>96 (34%)</b>	<b>85 (30%)</b>
<b>2-Year Institutions</b>				
Greenville Technical College	26 (9%)	25 (10%)	26 (9%)	32 (11%)
Spartanburg Community College	34 (12%)	26 (10%)	33 (12%)	28 (10%)
Trident Technical College	1 (.4%)	4 (2%)	5 (2%)	6 (2%)
Midlands Technical College	7 (3%)	7 (3%)	4 (1%)	5 (2%)
Piedmont Technical College	2 (.7%)	1 (0.4%)	5 (2%)	4 (1%)
York Technical College	2 (.7%)	4 (2%)	4 (1%)	4 (1%)
Tri-County Technical College	7 (3%)	4 (2%)	2 (0.7%)	3 (1%)
Florence-Darlington Technical College	2 (.7%)	-	2 (0.7%)	2 (0.7%)
USC Lancaster	2 (.7%)	-	5 (2%)	2 (0.7%)
Spartanburg Methodist College	1 (.4%)	2 (0.8%)	2 (0.7%)	-
USC Union	1 (.4%)	3 (1%)	2 (0.7%)	-
Other	13 (5%)	9 (4%)	10 (4%)	12 (4%)
<b>Total</b>	<b>98 (36%)</b>	<b>85 (33%)</b>	<b>100 (35%)</b>	<b>98 (32%)</b>

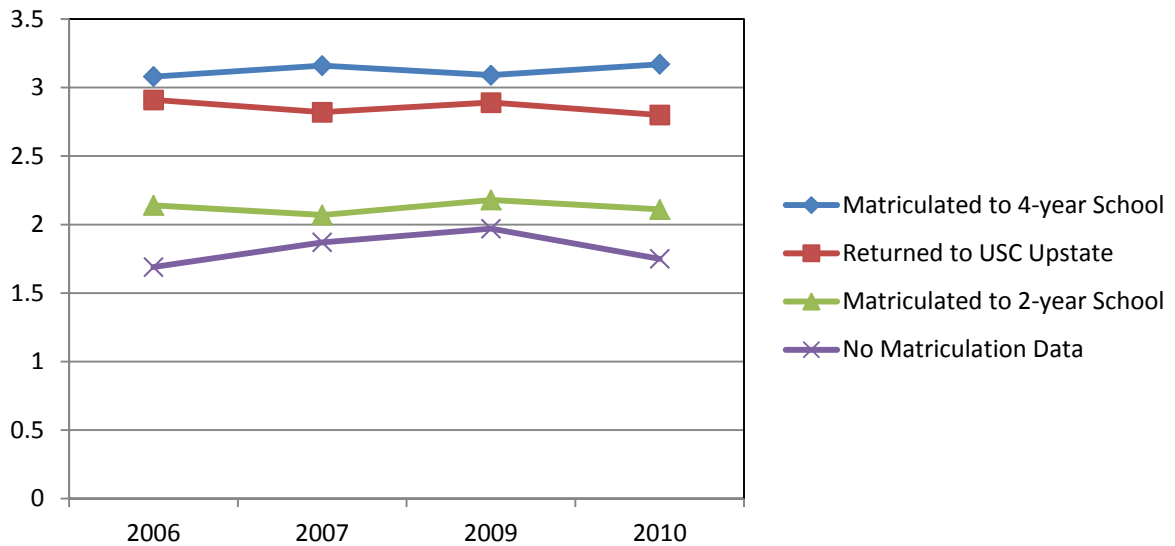
Note: The Freshman Analysis Report was not completed in 2008.

### Mean Total SAT Score and GPA of Students By Sophomore Matriculation

	2010 Cohort			2009 Cohort			2007 Cohort			2006 Cohort		
	N	Mean SATT	Mean Cum GPA	N	Mean SATT	Mean Cum GPA	N	Mean SATT	Mean Cum GPA	N	Mean SATT	Mean Cum GPA
<b>Matriculated to 4-year School</b>	94	1002	3.17	67	971	3.09	96	995	3.16	85	992	3.08
<b>Returning Students</b>	557	978	2.91	576	979	2.82	524	985	2.89	498	994	2.8
<b>Matriculated to 2-year School</b>	98	958	2.14	85	953	2.07	100	963	2.18	98	976	2.11
<b>No Matriculation Data</b>	82	983	1.69	103	952	1.87	85	1006	1.97	100	988	1.75

*Note: The Freshman Analysis Report was not completed in 2008.*

### Average GPA of Students Who Matriculated to Other Schools



*Note: The Freshman Analysis Report was not completed in 2008.*



### Freshmen to Sophomore Persistence

	1999 Cohort	2000 Cohort	2001 Cohort	2002 Cohort	2003 Cohort	2004 Cohort	2005 Cohort	2006 Cohort	2007 Cohort	2008 Cohort	2009 Cohort	2010 Cohort	AVG
The Citadel	74%	81%	78%	78%	81%	81%	82%	81%	83%	83%	80%	81%	80%
Coastal Carolina University	69%	68%	71%	73%	70%	64%	67%	71%	71%	66%	65%	63%	68%
College of Charleston	79%	80%	80%	83%	83%	82%	80%	79%	79%	82%	81%	83%	81%
Francis Marion University	68%	67%	69%	64%	66%	65%	67%	67%	67%	68%	68%	67%	67%
Lander University	67%	67%	67%	64%	65%	63%	62%	68%	68%	70%	68%	64%	66%
SC State University	74%	77%	73%	73%	69%	68%	65%	64%	64%	67%	63%	65%	69%
USC Aiken	70%	69%	71%	68%	64%	60%	66%	69%	69%	69%	73%	69%	68%
USC Beaufort	N/A	N/A	N/A	N/A	47%	46%	55%	57%	57%	60%	52%	52%	53%
USC Upstate	68%	65%	69%	63%	66%	62%	64%	65%	65%	65%	69%	66%	66%
Winthrop University	77%	75%	74%	78%	76%	72%	75%	72%	72%	67%	69%	72%	73%

\*CHE Data

## Transfer Success

2005 Cohort		2005	2006				2007				2008				2009				2010				2011			
Sub-Cohorts		% Cohort	Return N	Pct.	Grad N	Pct.	Return N	Pct.	Grad N	Pct.	Return N	Pct.	Grad N	Pct.	Return N	Pct.	Grad N	Pct.	Return N	Pct.	Grad N	Pct.	Return N	Pct.	Grad N	Pct.
0 - 29 hrs.	116	18.65%	68	58.62%	0	0.00%	47	40.52%	0	0.00%	38	32.76%	4	3.45%	25	21.55%	12	18.98%	9	7.76%	29	25.00%	0	0.00%	32	27.59%
30 - 59 hrs.	227	36.50%	151	66.52%	10	4.41%	117	51.54%	26	11.45%	59	25.99%	75	33.04%	22	9.69%	112	49.34%	12	5.29%	123	54.19%	6	2.64%	130	57.27%
60 - 89 hrs.	187	30.06%	124	66.31%	16	8.56%	65	34.76%	74	39.57%	17	9.09%	115	61.50%	8	4.28%	123	65.78%	3	1.60%	128	68.45%	2	1.07%	129	58.98%
90 - 188 hrs.	92	14.79%	57	61.96%	21	22.83%	26	28.26%	46	50.00%	3	3.26%	66	71.74%	1	1.09%	69	75.00%	1	1.09%	70	76.09%	1	1.09%	71	77.17%
Cohort 622	622		400	64.31%	47	7.56%	255	41.00%	146	23.47%	117	18.81%	260	41.80%	56	9.00%	326	52.41%	25	4.02%	350	56.27%	9	1.45%	362	58.20%

2006 Cohort		2006	2007				2008				2009				2010				2011							
Sub-Cohorts		% Cohort	Return N	Pct.	Grad N	Pct.	Return N	Pct.	Grad N	Pct.	Return N	Pct.	Grad N	Pct.	Return N	Pct.	Grad N	Pct.	Return N	Pct.	Grad N	Pct.	Return N	Pct.	Grad N	Pct.
0 - 29 hrs.	112	17.39%	77	68.75%	0	0.00%	58	51.79%	2	1.79%	45	40.18%	12	10.71%	15	13.39%	40	35.71%	10	8.93%	45	40.18%				
30 - 59 hrs.	220	34.16%	153	71.82%	13	5.91%	115	102.68%	37	16.82%	47	21.36%	96	43.64%	13	5.91%	125	56.82%	5	2.27%	135	61.36%				
60 - 89 hrs.	209	32.45%	151	72.25%	16	7.56%	63	30.14%	89	42.58%	23	11.00%	130	62.20%	10	4.78%	144	68.90%	4	1.91%	150	71.77%				
90 - 176hrs.	103	15.99%	58	56.31%	22	21.36%	20	19.42%	54	52.43%	3	2.91%	74	71.84%	1	0.97%	75	72.82%	0	0.00%	76	73.79%				
Cohort 644	644		444	68.94	51	7.92%	256	39.75%	182	28.26%	118	18.32%	312	48.45%	39	6.06%	384	59.63%	19	2.95%	406	63.04%				

2007 Cohort		2007	2008				2009				2010				2011											
Sub-Cohorts		% Cohort	Return N	Pct.	Grad N	Pct.	Return N	Pct.	Grad N	Pct.	Return N	Pct.	Grad N	Pct.	Return N	Pct.	Grad N	Pct.	Return N	Pct.	Grad N	Pct.	Return N	Pct.	Grad N	Pct.
0 - 29 hrs.	116	18.18%	67	57.76%	0	0.00%	52	44.83%	2	1.72%	35	30.17%	13	11.21%	12	10.34%	31	26.72%								
30 - 59 hrs.	226	35.42%	142	62.83%	11	4.87%	111	49.12%	36	15.93%	46	20.35%	94	41.59%	15	6.64%	119	52.65%								
60 - 89 hrs.	207	32.45%	149	71.98%	18	8.70%	68	32.85%	100	48.31%	19	9.18%	143	69.08%	7	3.38%	152	73.43%								
90 - 212hrs.	89	13.95%	52	58.43%	19	21.35%	15	16.85%	53	59.55%	5	5.62%	64	71.91%	0	0.00%	67	75.28%								
Cohort 638	638		410	64.26%	48	7.52%	246	38.56%	191	29.94%	105	16.46%	314	49.22%	34	5.33%	359	57.84%								

2008 Cohort		2008	2009				2010				2011															
Sub-Cohorts		% Cohort	Return N	Pct.	Grad N	Pct.	Return N	Pct.	Grad N	Pct.	Return N	Pct.	Grad N	Pct.	Return N	Pct.	Grad N	Pct.	Return N	Pct.	Grad N	Pct.	Return N	Pct.	Grad N	Pct.
0 - 29 hrs.	146	21.28%	97	66.44%	0	0.00%	70	47.95%	0	0.00%	45	30.82%	13	8.90%												
30 - 59 hrs.	241	35.13%	177	73.44%	6	2.49%	133	55.19%	23	9.54%	58	24.07%	87	36.10%												
60 - 89 hrs.	204	29.74%	145	71.57%	38	18.63%	69	33.82%	86	42.16%	24	11.76%	129	63.24%												
90 - 174hrs.	95	13.85%	57	60.00%	15	15.79%	17	17.89%	49	51.58%	4	4.21%	64	67.37%												
Cohort 686	686		477	69.53%	59	8.50%	289	42.13%	158	23.03%	131	19.10%	293	42.71%												

2009 Cohort		2009	2010				2011							
Sub-Cohorts		% Cohort	Return N	Pct.	Grad N	Pct.	Return N	Pct.	Grad N	Pct.	Return N	Pct.	Grad N	Pct.
0 - 29 hrs.	113	15.92%	69	61.06%	0	0.00%	59	52.21%	2	1.77%				
30 - 59 hrs.	259	36.48%	172	66.41%	9	3.47%	136	52.51%	37	14.29%				
60 - 89 hrs.	227	31.97%	162	71.37%	14	6.17%	76	33.48%	89	39.21%				
90 - 250hrs.	111	15.63%	59	53.15%	28	25.23%	18	16.22%	62	55.86%				
Cohort 710	710		462	65.07%	51	7.18%	289	40.70%	190	26.76%				

2010 Cohort		2010	2011			
Sub-Cohorts		% Cohort	Return N	Pct.	Grad N	Pct
0 - 29 hrs.	112	15.64%	62	55.36%	0	0.00%
30 - 59 hrs.	262	36.59%	175	66.79%	7	2.67%
60 - 89 hrs.	214	29.89%	164	76.64%	11	5.14%
90 - 229hrs.	128	17.88%	78	60.94%	0	0.00%
Cohort 716	716		479	66.90%	18	2.51%

2011 Cohort		2011
Sub-Cohorts		% Cohort
0 - 29 hrs.	101	13.13%
30 - 59 hrs.	290	37.71%
60 - 89 hrs.	248	32.25%
90 - 212hrs.	130	16.91%
Cohort 769	769	

## USC Upstate Bachelor's/Master's Degrees

USC Upstate Bachelor's/Master's Degrees								
Degrees conferred between July 1 and June 30th.								
	03-04	04-05	05-06	06-07	07-08	08-09	09-10	10-11
Communication Studies/Speech	42	54	58	53	49	44	42	56
Computer & Information Science	51	78	39	47	34	18	13	13
Information Technology	0	0	0	0	0	32	25	28
Information Science	1	0	0	0	0	*35	12	11
Special Education-Learning Disabled	7	9	10	15	5	16	16	8
Special Education-Vision Impairments-Graduate	2	6	2	4	1	3	0	3
Elementary Education-Undergraduate	59	51	53	40	39	37	53	52
Elementary Education-Graduate	2	4	3	1	4	5	2	2
Middle School Education	1	12	14	15	22	11	28	19
Secondary Education	22	27	26	15	14	18	26	32
Early Childhood Education-Undergraduate	42	47	60	53	52	63	72	78
Early Childhood Education-Graduate	6	4	4	7	7	6	4	3
Art Teacher Education	0	0	0	0	0	0	1	3
Physical Education	12	16	11	12	17	19	17	24
Engineering Industrial Management	0	0	0	0	2	2	11	9
French Language	0	3	0	0	0	0	0	0
Spanish Language	5	1	2	6	1	1	4	3
English Language	6	12	8	14	12	13	9	7
Liberal Arts & Sciences	96	101	86	80	85	84	78	91
Biology	14	24	12	25	33	25	33	20
Mathematics	3	3	17	3	5	5	7	4
Chemistry	2	2	2	4	6	2	1	1
Psychology	43	47	55	62	71	60	47	66
Criminal Justice	38	36	40	41	49	29	27	34
Political Science	9	15	13	15	13	19	15	13
Sociology	22	12	19	14	15	17	12	11
Fine/Studio Art/Commercial Art	5	6	3	4	3	17	10	20
Commercial Music	0	0	0	0	0	0	0	0
Nursing (ASN RN BSN)	155	170	195	214	234	268	263	282
Business Administration	128	129	152	161	148	169	169	176
Non-Profit Organizational Management	1	2	1	2	2	8	17	8
History	19	23	24	15	16	17	18	9
<b>Total Degrees Awarded</b>	<b>793</b>	<b>894</b>	<b>909</b>	<b>922</b>	<b>939</b>	<b>1,008</b>	<b>1,032</b>	<b>1,086</b>

\*Information Management is grouped with Computer & Information Sciences (108's, 132's & 170's)