

# Upstate Alcohol & Drug Facts & Stats

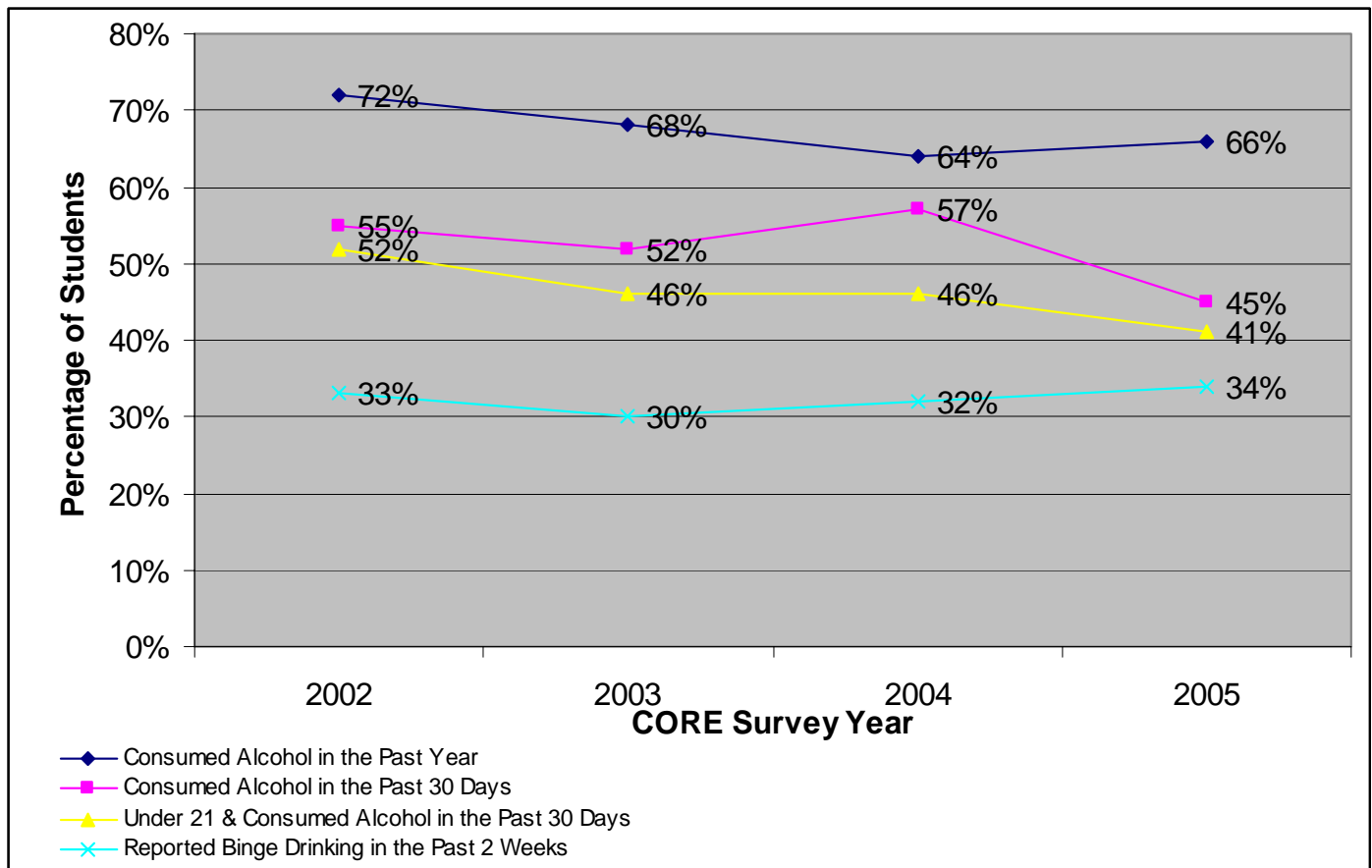
## Overview

Want to know more about USC Upstate's alcohol and drug use and non-use? Feel free to contact Erin Morgan, Coordinator of Alcohol & Drug Education Programs, at 503-5195 to schedule a workshop for your class, organization, or group.

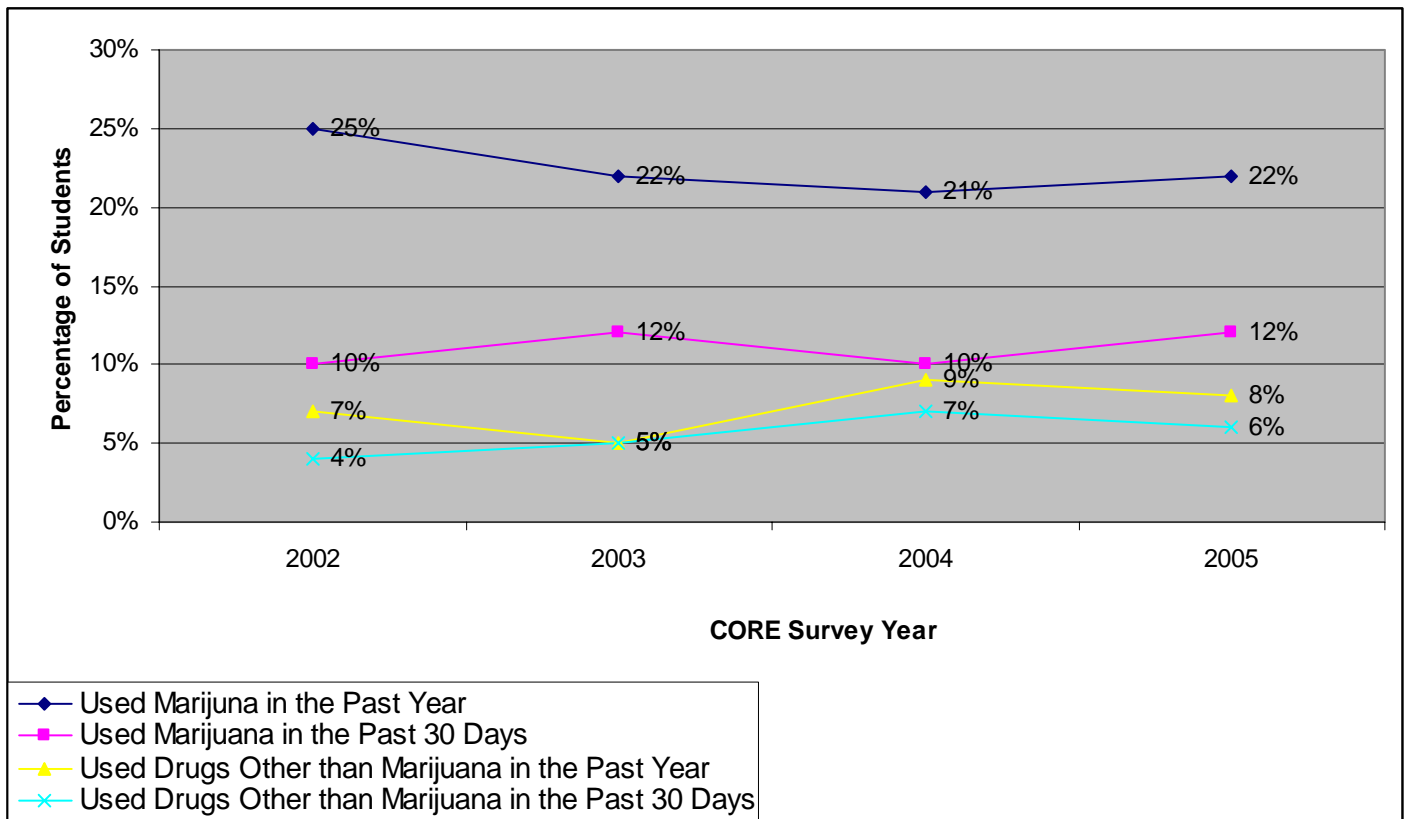
The office of Alcohol & Drug Education Programs at USC Upstate is committed to the prevention of alcohol and other drug abuse. Below are some pertinent facts and statistics about alcohol and other drug use, non-use, and misuse at USC Upstate as taken from the annual CORE Alcohol & Drug Survey. The CORE survey was developed to measure alcohol and other drug usage, attitudes, and perceptions among college students. It is a voluntary and confidential survey at USC Upstate that is distributed to students through a variety of means, including a random mailing. The CORE survey includes several types of items regarding alcohol and drugs. One type deals with attitudes, perceptions, and opinions about alcohol and other drugs and the other type deals with the students' own use and consequences of use. There are also items regarding students' demographic and background characteristics as well as perceptions around the campus climate and policies. The following 3 charts are summaries of important CORE survey data from 2002-2005. Click [here](#) to see the actual Executive Summary of all of the CORE data for March 2005.

*\*Note that the CORE survey is completely based on self-report, which may affect the accuracy of results.*

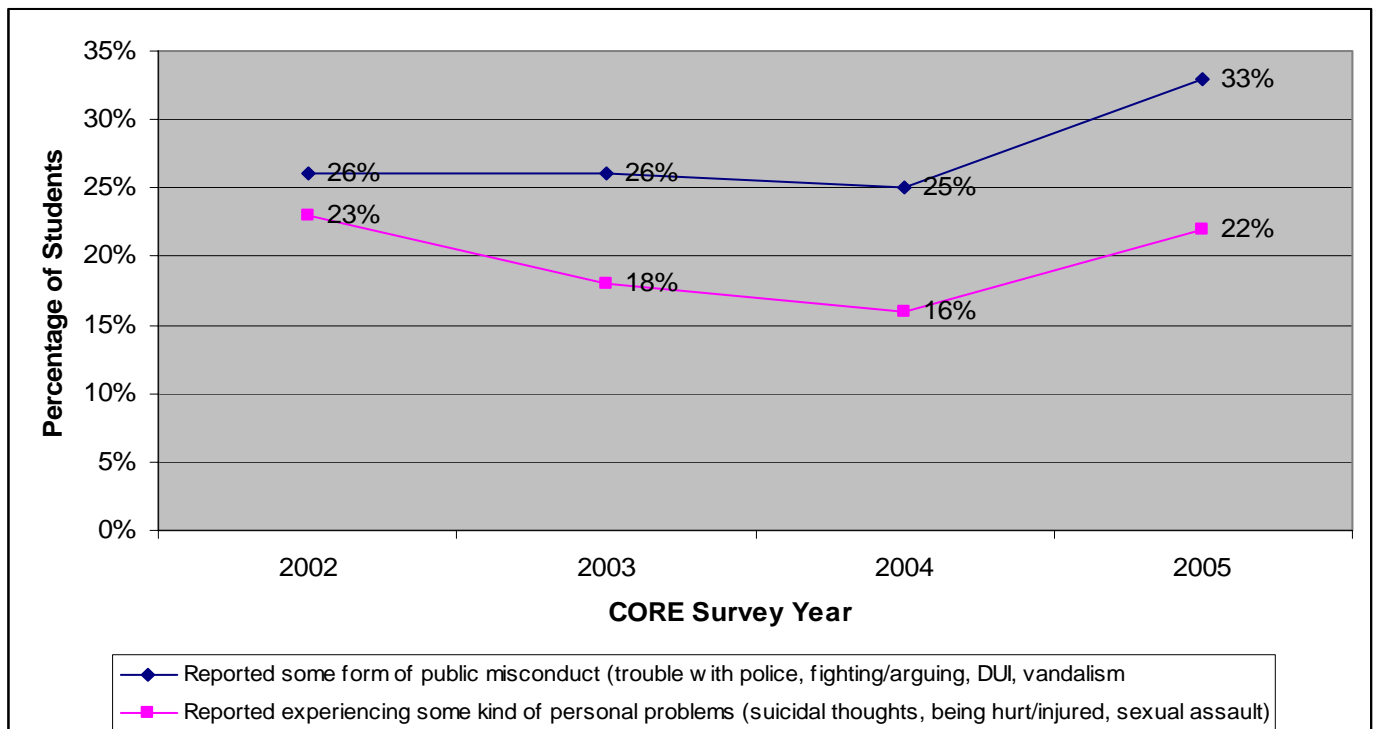
## Alcohol Use Among USC Upstate Students



## Marijuana and Other Drug Use Among USC Upstate Students



## Consequences of Alcohol & Drug Use Among USC Upstate Students



# Average Number of Drinks Consumed Per Week at USC Upstate (Compared to the National College Student Average)

